

Tungsten Enclosing Furnace by Electron Beam

[Machine overview]



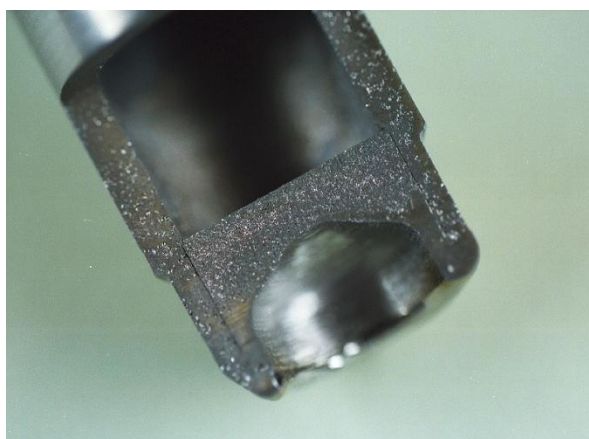
[Enclosed sample]



Welded tungsten crucible

Cross section of a welded part

A user puts the sample into crucible and then welds the lid and main body in a vacuum environment using a beam welding machine.



GES CORPORATION

6-4-4 Shirakashidai, Rifu-cho, Miyagi-gun, Miyagi 981-0134

URL <http://www.ges.co.jp>

